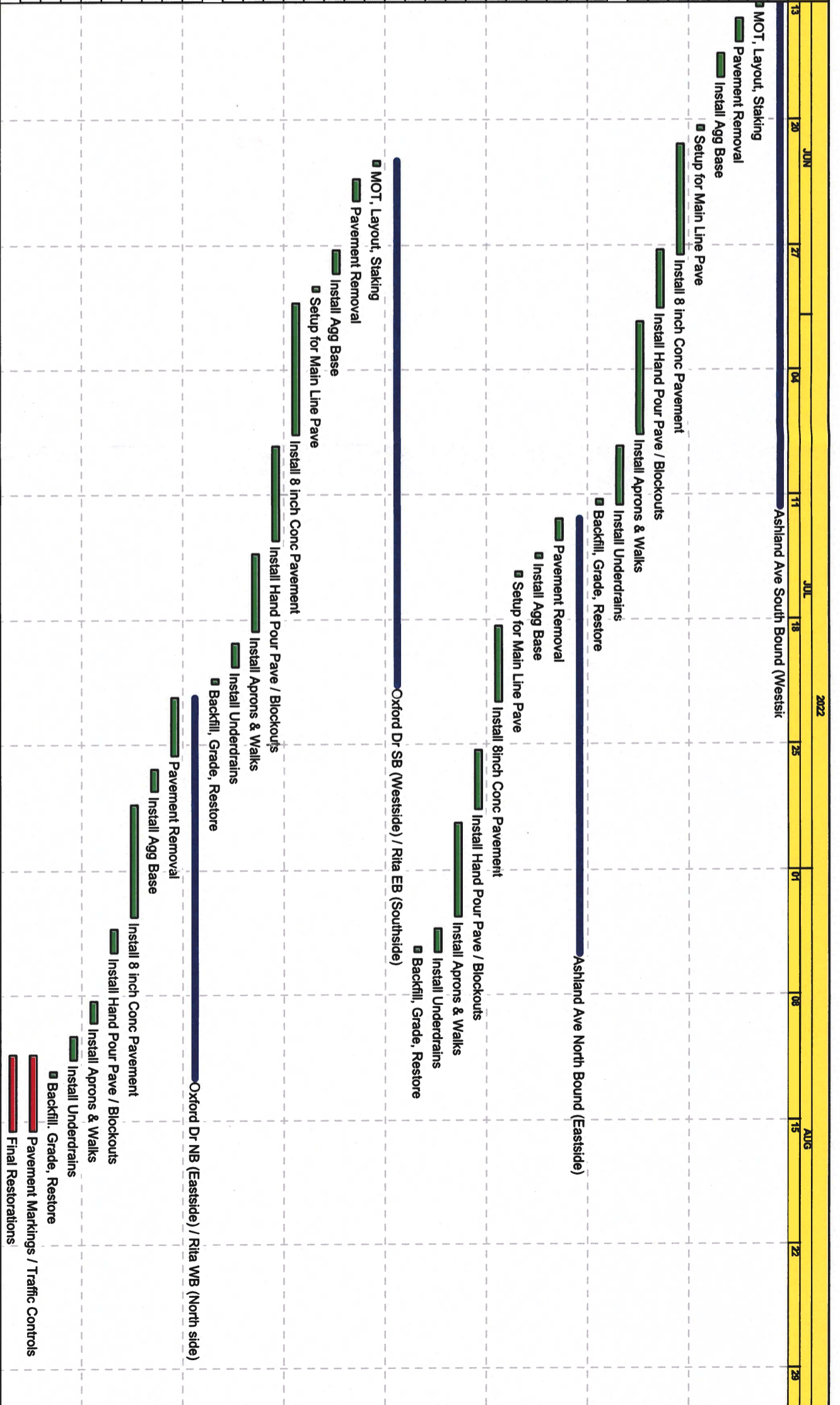


Description	Orig Dur	Rem Dur	Early Start	Early Finish
Ashland Ave South Bound (Westside)	20d *	20d *	13JUN22	11JUL22
MOT, Layout, Staking	1d	1d	13JUN22	13JUN22
Pavement Removal	2d	2d	14JUN22	15JUN22
Install Agg Base	2d	2d	16JUN22	17JUN22
Setup for Main Line Pave	1d	1d	20JUN22	20JUN22
Install 8 inch Conc Pavement	5d	5d	21JUN22	27JUN22
Install Hand Pour Pave / Blockouts	4d	4d	27JUN22	30JUN22
Install Aprons & Walks	4d	4d	01JUL22	07JUL22
Install Underdrains	2d	2d	08JUL22	11JUL22
Backfill, Grade, Restore	1d	1d	11JUL22	11JUL22
Ashland Ave North Bound (Eastside)	19d *	19d *	12JUL22	05AUG22
Pavement Removal	2d	2d	12JUL22	13JUL22
Install Agg Base	1d	1d	14JUL22	14JUL22
Setup for Main Line Pave	1d	1d	15JUL22	15JUL22
Install 8 inch Conc Pavement	5d	5d	18JUL22	22JUL22
Install Hand Pour Pave / Blockouts	4d	4d	25JUL22	28JUL22
Install Aprons & Walks	4d	4d	29JUL22	03AUG22
Install Underdrains	2d	2d	04AUG22	05AUG22
Backfill, Grade, Restore	1d	1d	05AUG22	05AUG22
Oxford Dr SB (Westside) / Rita EB	21d *	21d *	22JUN22	21JUL22
MOT, Layout, Staking	1d	1d	22JUN22	22JUN22
Pavement Removal	2d	2d	23JUN22	24JUN22
Install Agg Base	2d	2d	27JUN22	28JUN22
Setup for Main Line Pave	1d	1d	29JUN22	29JUN22
Install 8 inch Conc Pavement	5d	5d	30JUN22	07JUL22
Install Hand Pour Pave / Blockouts	4d	4d	08JUL22	13JUL22
Install Aprons & Walks	3d	3d	14JUL22	18JUL22
Install Underdrains	2d	2d	19JUL22	20JUL22
Backfill, Grade, Restore	1d	1d	21JUL22	21JUL22
Oxford Dr NB (Eastside) / Rita WB (North)	16d *	16d *	22JUL22	12AUG22
Pavement Removal	2d	2d	22JUL22	25JUL22
Install Agg Base	2d	2d	26JUL22	27JUL22
Install 8 inch Conc Pavement	5d	5d	28JUL22	03AUG22
Install Hand Pour Pave / Blockouts	2d	2d	04AUG22	05AUG22
Install Aprons & Walks	2d	2d	08AUG22	09AUG22
Install Underdrains	2d	2d	10AUG22	11AUG22
Backfill, Grade, Restore	1d	1d	12AUG22	12AUG22
Pavement Markings / Traffic Controls	3d	3d	11AUG22 *	15AUG22
Final Restorations	3d	3d	11AUG22 *	15AUG22



Start date 13JUN22
 Finish date 15AUG22
 Data date 13JUN22
 Run date 23MAY22
 Page number 1A
 © Primavera Systems, Inc.

Fabrizi Trucking and Paving Co
 Lorain Local OPWC 35A

Legend:
 ■ Early bar
 ■ Progress bar
 ■ Critical bar
 ■ Summary bar
 ◆ Start milestone point
 □ Finish milestone point